

# RACE TRANSPORTER 5

**BRIAN JAMES TRAILERS**

STYLE, SUBSTANCE, SPACE

» Connected to you



Your official dealer :

*Alsa Remorque*

## RACE TRANSPORTER 5 FUNCTION, FEATURES, STYLE



CLASS  
LEADING  
QUALITY



**Race Transporter 5** provides users requiring optimum access and high specification with the ideal solution.

**Race Transporter 5** is available in a choice of lengths, widths and capacities. The low bed chassis provides stable and safe towing which combined with tilt-bed operation ensures low vehicles are easily accommodated.

All **Race Transporter 5** models feature a full width ramp door with single closing and locking mechanism and full bodywork to finish the look. Standard equipment also includes a pair of asymmetric side doors with personnel access, a pair of forward hatch doors, a remote control electric winch, wheel strap set and wheel chocks. Other convenient features include external and internal LED lighting throughout plus under deck storage.



*Alsa Remorque*

RACE TRANSPORTER 5

# RACE TRANSPORTER 5

## RACE TRANSPORTER 5

### Function, Features, Style

From its dependable ride to an abundance of usability features and high level of standard equipment, **Race Transporter 5** is a performer through and through.

Recent updates include revised styling inside and out, a full length black vinyl graphic, triple-grip punched aluminium decking, deck storage solutions and lids. Modern alloy wheel options in silver or diamond-cut black anthracite finish completes the high quality presentation.

Our commitment to functionality is found in everything we do. **Race Transporter 5**, in common with the Race Transporter range is made from high-grade materials to ensure strength and long term durability.



#### ● Body Colour

Race Transporter 5 range is available in white or black bodywork.



● **Large twin side doors** and front hatches provide practical access to trailers. Separately opening pedestrian doors work well in tight spaces.



● **Front access hatches** are convenient for reaching inside during vehicle strapping.

*Alsa Remorque*

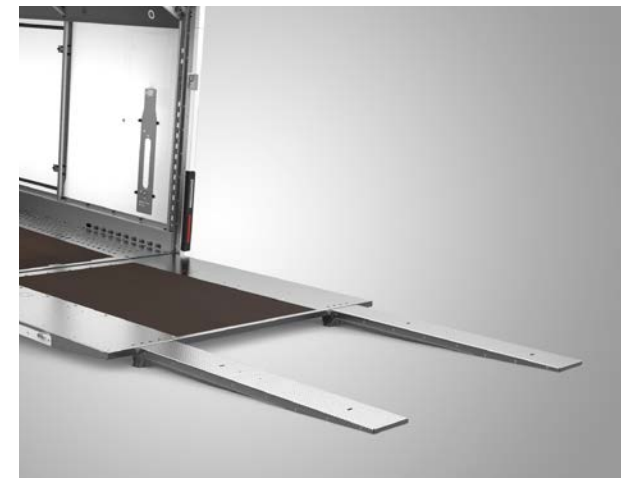


● **Daylight roof** takes advantage of natural daylight to create an enhanced working environment.

● Full width, full height **rear door ramp** features a high quality moulded rear bodywork. A central "easy close" integrated locking mechanism is key to operator convenience.



● **Hydraulic tilt-bed**  
Powerful hydraulic hand pump and cylinder powers the tilt-bed operation to create a convenient low loading angle.



○ **Assistor ramps** offer ultra-low loading angles. Stored just inside the trailer rear door for travel.

● Standard ○ Optional at extra cost



RACE TRANSPORTER 5



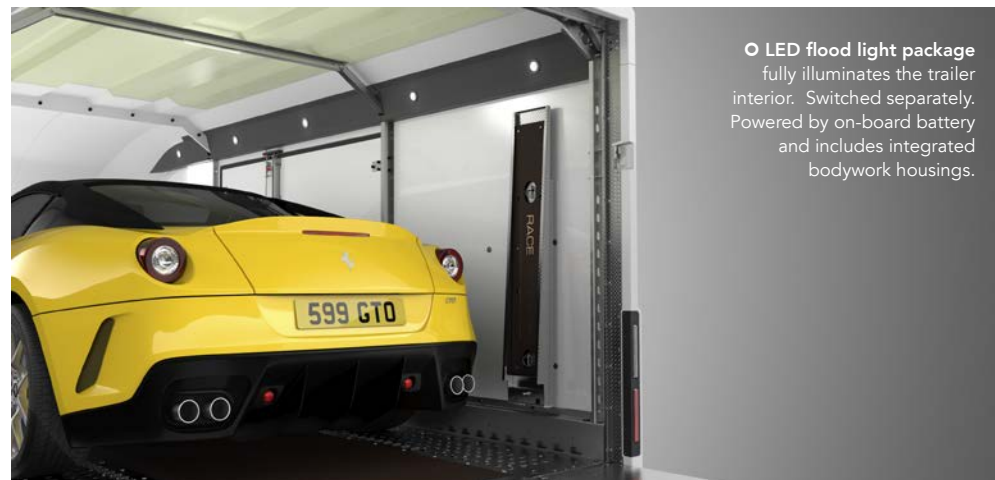
● **Full LED lighting**

LED lights are both super bright and reliable. All lamps are LED technology as standard.

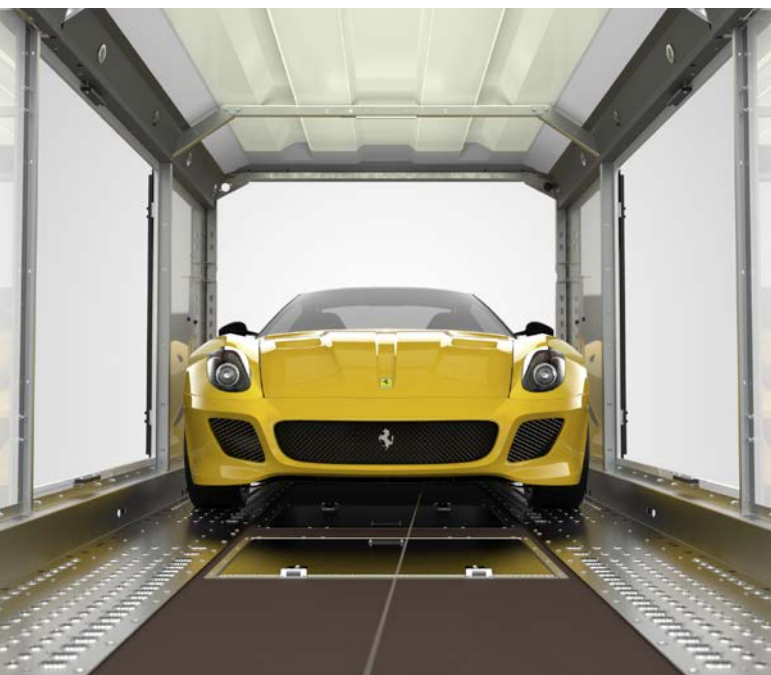
**LED lamps: Note**

LED lamps are not compatible with all towing vehicles. This may cause unintended consequences. Please check compatibility.

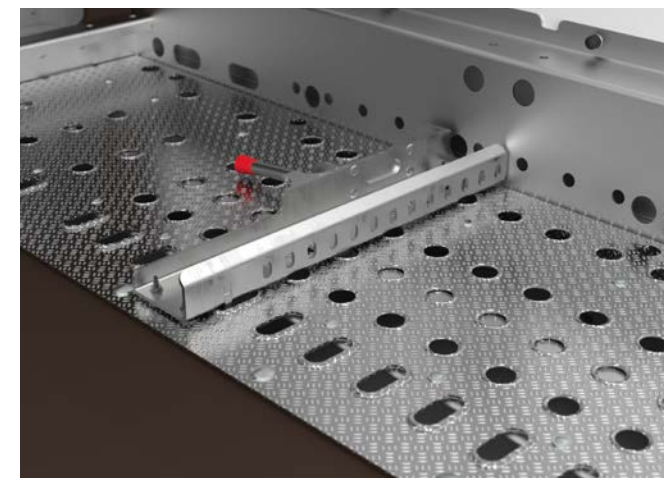
● **x3 LED lighting strips as standard**



○ **LED flood light package** fully illuminates the trailer interior. Switched separately. Powered by on-board battery and includes integrated bodywork housings.



● **Electric winch, 12V with remote control lead.** 4,500 lbs capacity, roller fairlead, wire cable and snap hook. On-board battery power. Multi-slide positioned mounting allows suits all towing eye locations.



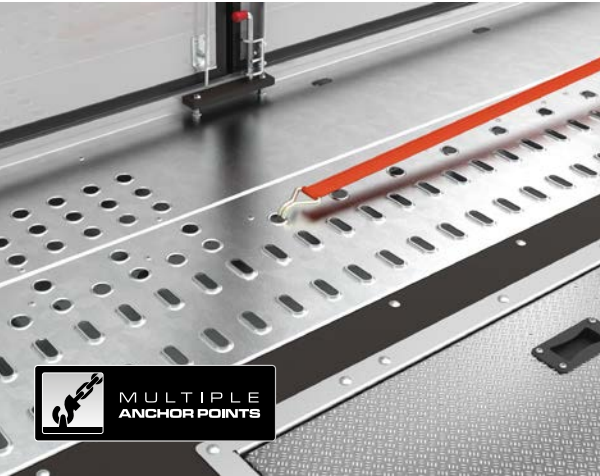
● **Fully adjustable, quick release wheel chocks** Suitable for cars with low splitters.

○ **Commercial type wheel chocks** also available. (see p24)

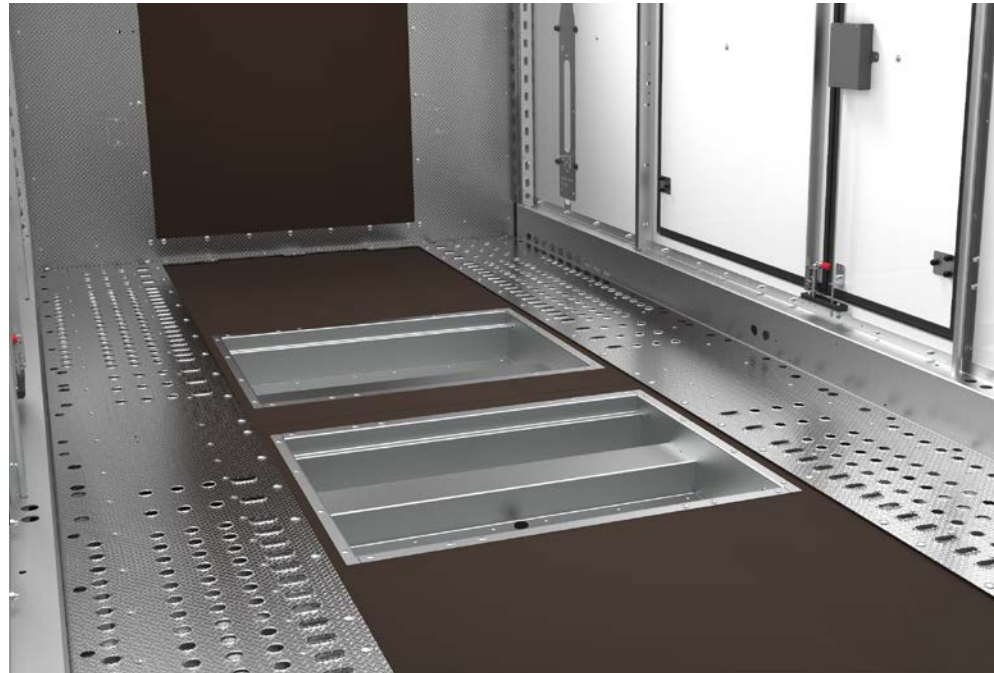


- **Multiple anchor points** and high strength decking provides strap attachment locations and a high level of grip.

- Optional **deck slick pads** are available to protect race tyres.

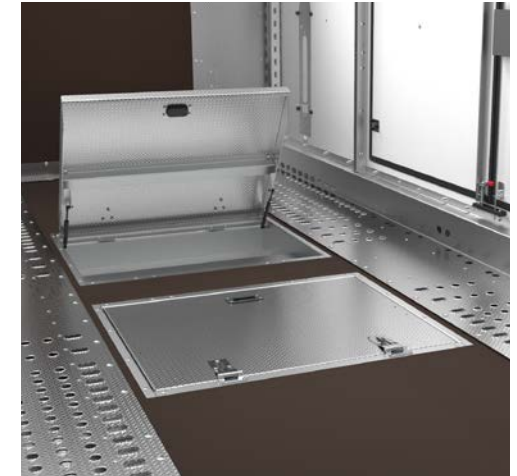


**MULTIPLE ANCHOR POINTS**



- **Floor storage trays** provide an ideal location for heavy/bulky items.

- **Aluminium gas strut assisted lids** available.



**TIE-DOWN 'SLEEVES'**

- **Tie-down wheel 'sleeve' straps**  
Approved by car manufacturers and race teams alike, these straps hold the vehicle safely and securely without straining the suspension geometry.



*Alsa Remorque*



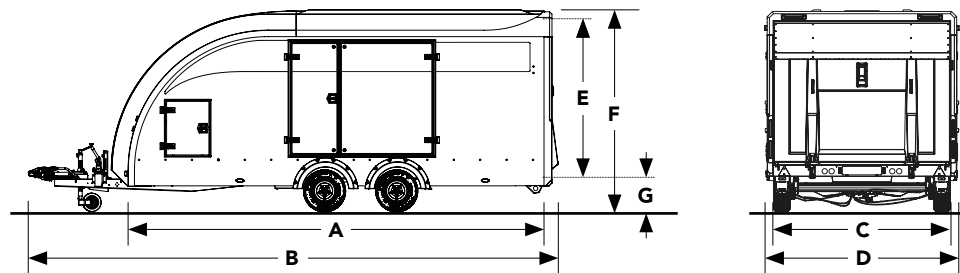
- **Twin axle** and light weight **low chassis** ensures excellent towing stability.

- **Wheel options**  
Alloy wheels available in Silver or diamond cut Anthracite.

# RACE TRANSPORTER

## RACE TRANSPORTER 5

### STANDARD EQUIPMENT



MODEL	RACE TRANSPORTER 5			
	385-1090	385-2090	385-1100	385-2100
PRODUCT CODE				
CAPACITY				
Gross kg	3,500	3,500	3,500	3,500
Load kg	2,300	2,300	2,260	2,260
Unladen trailer weight kg	1,200	1,200	1,240	1,240
DIMENSIONS				
Chassis length m A	5.50	5.00	5.50	5.50
Minimum usable bed length m	5.35	4.85	5.35	5.35
Overall length m B	6.65	6.65	7.12	7.12
Internal width m C	2.12	2.12	2.12	2.12
Overall width m D	2.50	2.50	2.50	2.50
Internal height m E	1.88	1.88	1.88	1.88
Overall height (unloaded) m F	2.53	2.53	2.53	2.53
Bed height (unloaded) m G	0.48	0.48	0.48	0.48
OPERATION				
Hydraulic tiltbed	•	•	•	•
Electric winch plus battery onboard	•	•	•	•
Coupling head with integral high security lock	•	•	•	•
EXTERIOR/DOORS				
Body colour	White	Black	White	Black
Full body length black vinyl body stripe package	•	—	•	—
Side doors	Twin (2 sides)	Twin (2 sides)	Twin (2 sides)	Twin (2 sides)
Front access hatches	•	•	•	•
Rear door – aluminium/steel construction with body moulding	•	•	•	•
Daylight roof	•	•	•	•
RUNNING GEAR				
Wheel size	12" (155/70)	12" (155/70)	12" (155/70)	12" (155/70)
Axles	2	2	2	2
Spare wheel	•	•	•	•
Heavy duty jockey wheel	•	•	•	•
WARRANTY				
5 year extended chassis warranty	•	•	•	•

# RACE TRANSPORTER

## QUALITY

Brian James Trailers are manufacturers of class leading trailers since 1979. When you buy a Brian James Trailer you can be absolutely certain that it is designed and constructed to the highest possible standards. Our engineers combine top-quality craftsmanship with the best materials and first-class presentation. Light but strong, our trailers are crafted to enhance safety, efficiency and durability.

## 5 Year Extended Chassis Warranty

All of our trailers come with a standard 1 year non-transferable manufacturer's warranty covering the integrity of the chassis, which can be extended to 5 years at no additional charge upon registration.

This 5 year extended warranty applies to the chassis only. All other components are subject to a standard 1 year warranty, subject to fair wear and tear.

**5** \* 5 YEAR  
EXTENDED  
WARRANTY

RACE TRANSPORTER  
STYLE, SUBSTANCE, SPACE

## Standards



\* 1 year warranty as standard. Additional 4 year warranty period requires product registration.

*Alsa Remorques*





# BRIAN JAMES TRAILERS

» Connected to you

Your official dealer :

## ALSA REMORQUE - BRIAN JAMES ALSACE

22 route de Colmar  
67600 Sélestat

Tél. 03 88 92 02 19 GSM 06 47 12 84 90

<https://www.alsa-remorque.fr>    [info@alsa-remorque.fr](mailto:info@alsa-remorque.fr)  
<https://www.brianjamesalsace.fr>    [brian.james.alsace@gmail.com](mailto:brian.james.alsace@gmail.com)

## NOTES

All images used are for illustrative purposes only and may show non-standard equipment and finishes. All products are subject to change without prior notice due to our continuous development programme.

© BRIAN JAMES TRAILERS LIMITED



THE QUEEN'S AWARDS  
FOR ENTERPRISE:  
INTERNATIONAL TRADE  
2018

Brian James Trailers Limited.  
Sopwith Way, Drayton Fields Industrial Estate  
Daventry, Northampton, NN11 8PB

Brian James Trailers are available by contacting our official dealer.

Dealer information

*Alsa Remorque*